

# CALIFORNIA BOOK FAIR 2025

## SOME HIGHLIGHTS

### OCCASIONAL LIST 25

**JANETTE RAY BOOKSELLERS**  
**TEL: +44 (0) 1904 623088**  
**MOBILE: + 44 [0] 780 394 1307**  
**EMAIL: BOOKS@JANETTERAY.CO.UK**  
**WEBSITE: WWW.JANETTERAY.CO.UK**



## THE ARTS AND CRAFTS MOVEMENT

### C R Ashbee – association copy

**1. [ASHBEE] WHITMAN, Walt. Calamus | A series of letters written during the years 1868-1880 by Walt Whitman to a young friend (Peter Doyle); edited with an introduction, by Richard Maurice Bucke M.D. one of Whitman's literary executors**

Boston, Laurens Maynard, 1897 | First Edition. Hardcover. Small Octavo, viii, 173 pages; green spine, some shelf wear. Illustrated with a portrait of Whitman with Doyle and a facsimile of a Whitman letter. Signed dedication copy to C. R. Ashbee from Charles Holden. Dedication on front end paper "To C. R. Ashbee. This little book big with the soul love and comradeship of which it signifies so much" from Charlie Holden Oct. 12 1898. Leather gilt decorated book ownership plate of C. R. and Janet Ashbee on front paste down. Also A.L.S. loosely inserted from Charles Holden written from 52 Falmouth Road, S.E. and dated as the inscription. Please accept this little book ....etc. Holden, soon into his architectural

career, worked for C. R. Ashbee before moving on to work in 1898 with H. Percy Adams. He became chief assistant in H Percy Adams' practice, where he remained for the rest of his career. The practice became Adams & Holden in 1907. Holden was a devotee of the poetic work of Walt Whitman from whom he derived inspiration and his design philosophy. [Ref: 22986] **£600**



### Manuscript notebook

**2. CARNSON, Lillian M. | Untitled Applied Arts Student Course Notebook/Sketchbook with illustrations for industrial design in the arts and crafts style**

Bolton, Lancashire Bolton Borough Council, 1903-1905 | Manuscript book dated November 1903-1905. 20pp hand written course notes + c40pp hand drawn designs mostly with colour applied. Some loose pages inserted including blotter and some blank pages. Arts and Crafts style designs for tiles, wallpapers and decorative etc. The notes for 1903 form one section of the book whilst those for 1905 form another starting at the reverse end of the notebook. Lovely item. Cloth bound. Spine . Some small amount of foxing else very good. Rare survival of a student of industrial design of the period. Bolton School of Art was built at Hilden Street in 1901 at a cost of £9,000 and art classes started in 1903, a temporary arrangement until



more suitable premises could be found. In 1905 art classes were moved to Mawdsley Street. Lillian Carnson attended the applied art classes at this wonderful arts and crafts style college building. Newspaper records of prize giving for 1905-1908 records her as a prize winning student. A slip in the book suggests that by 1913 she may have been teaching applied art courses. This with a fragment of paper listing pupil names [ all female] indicates this further. A very good example of a design notebook of the period. [Ref: 23197] **£525**

### Furniture designs

#### 3. ELMDON & CO. A Catalogue of Furniture Made by Elmdon & Co [...] From Designs by Charles Spooner & Arthur J. Penty

London, Martlet Press, nd. c1905 | xvpp text + 60 b/w plates, mostly photographs with some line ills. Small square 4to in brown paper wrappers with Arts and Crafts lettering. A good copy but with part of spine chipped away. From the collection of Charles Spooner. Lovely showcase catalogue, issued just after Elmdon took over the Wood Handicraft Society. The introductory essay lays out their design philosophy and explains their use of traditional methods and materials, especially oak, mahogany and walnut. The catalogue displays some of the company's finest 'moderate priced' furniture, designed by Spooner and Penty. Overall, the catalogue is a kind of visual manifesto for the newly formed company, its contents reflecting an ideological as well as aesthetic stance. The last pages show shop front design which both architects engaged with. Rare. *Charles Spooner [1862-1938] was an architect, active socialist and teachers as well as furniture maker. He began his practice in 1891. He also taught at the Guild of Handicraft and Central School of Arts and Crafts. Arthur Joseph Penty [1875-1937] was also an architect, initially from York & was a writer on Guild Socialism and Distribution.* [Ref: 22888] **£500**



#### 4. (GIMSON, Ernest 1864-1919) LETHABY, W. R.; POWELL, Alfred H; and GRIGGS, F. L. | Ernest Gimson his life and work

Stratford upon Avon, Shakespeare Head Press, 1924 | vii + (1) + 47 + (1) + (v) + 1pp, list of subscribers. 60 collotype plates and 8 text ills. 4to. Original publishers boards, cloth spine and printed label. [A spare label tipped in to rear.] Handmade and lettered dust wrapper which has hand drawn Shakespeare Head illustration on lower wrapper perfectly complementing the book. Drawings by F.L. Griggs and plates which illustrate Gimson's own work including silverwork, cottages etc. Limited edition of 550 copies. This number 276. Biographical notes by

W.R. Lethaby, Alfred Powell and F.L. Griggs. The definitive book, beautifully produced as a tribute to Ernest Gimson's productive life. From the library of Henry Harwood Holmes with his name and address on front end paper. Laid in are 4 original photographs - three taken by Holmes in 1936 of Sapperton including Gimson's cottage and grave, and a fourth of Holmes in his workshop making a lute. Notes of verso of this last photographs provides context and this copy of the book gifted to Mr Newman. Two letters relating to the book from Elizabeth Holmes 1987 and response from Anne Carruthers at Cheltenham Art Gallery concerning value of the book. Holmes was a devotee of the craftsmanship that Gimson. Holmes worked from Sheffield. [Ref: 22825] **£750**

#### 5. HEAL & SON | Simple Bedroom Furniture Illustrated by woodcuts from original designs made by Heal and Son

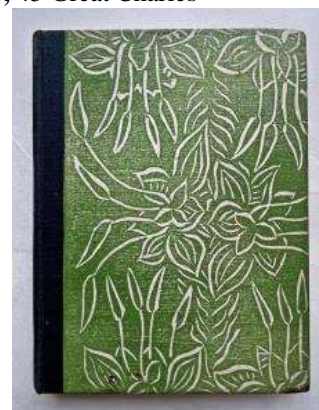
London, By the Firm, Tottenham Court Road and printed and designed at the Guild Press Birmingham, 1889 | 40pp illustrated with woodcut illustrations. Prices given below each illustration. With an essay by the late Mr Gleeson White on Simplicity in Design. Loose insertion of broadsheet



“Extracts from Reviews on Heal & Son’s Previous Publications.” Decorated wrappers, these slightly worn at edges. Name of William R Brewer on upper wrapper. From the collection of Robin de Beaumont with his bookplate. The publication was produced by The Guild Press, 45 Great Charles Street Birmingham including the woodcuts which were drawn and engraved by the Press. [Ref: 22750] **£375**

**6. MAIRET, Ethel M. | Vegetable Dyes Being a Book of Recipes and Other Information Useful to the Dyer; First published in 1916 it is now revised and reprinted for the fifth time**

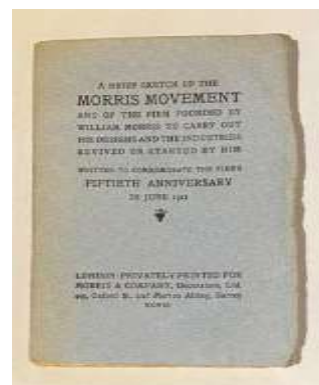
Ditchling, Hassocks St. Dominic's Press, 1931 | 89 pp. + section of fascinating period adverts including one with original hand printed fabric from Phyllis Barron & Dorothy Larcher, Painswick. Cloth-backed decorated boards. Nicest edition. Very good copy. [Pictured right]  
[Ref: 22991] **£68**



**William Morris**

**7. (MORRIS) A Brief Sketch of the Morris Movement and of the firm founded by William Morris to carry out his designs and the industries revived or started by him. Written to commemorate the firm’s fiftieth anniversary in June 1911**

London, Privately printed for Morris & Company at The Chiswick Press, 1911. 63pp, with b/w photographs. 18mo. Original paper wrappers Very good. An interesting history of the company, written to commemorate the fiftieth anniversary. Illustrated with photographs of the various manufacturing processes including printing and washing chintzes and stained glass painters at work.  
[Ref: 23164] **£125**



**Supporting handicrafts**



**8. WARNER H.H. Selected and arranged Songs of the Spindle & Legends of the Loom**

London, N.J. Powell and Co. 1889 | 32pp with 11 illustrations by A Tucker, H H Warner and Edith Capper. Small 4to. Linen cover with title and motif stamped on front, flax flower stamped on back. Internally printed in sepia inks. Front end paper browned. Inscription from former owner dated 1905. Written during the Arts and Crafts Movement period, the book calls for a revival of craftsmanship in the face of industrialisation and the rise of

machine-automated tasks. The use of unbleached linen—the colour of dried flax—and handmade linen-rag paper create an authentic medium for conveying the simple and powerful importance of this textile. [Ref: 23213] **£110**

**GARDEN CITIES**

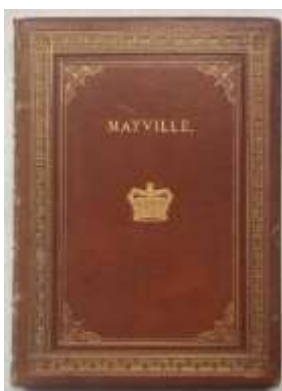
**9. BENOIT LÉVY, Georges [ Préface par Charles Gidé ] | La Cité Jardin Premier Volume Garden City**

Paris, Éditions Des Cités-Jardins de France, [1904] 1911 | 2nd edition. viii, 290pp Louis de Meuleneere, Bruxelles pasted down as bookseller’s ticket. Small tear to joint at the foot of the spine but every good overall. Pages uncut in parts. French text. As well as an introduction by Charles Gidé there is an introduction by William Morris. Illustrated with b/w plates. Describes and discusses the British Garden Cities and their precursors. Includes material on Welwyn Garden City, Port Sunlight, Bournville, Moor Park and many other locations and considers the influence of Garden City principles on suburban design. Lovely production. Refers widely to the British movement and its protagonists

including Ebenezer Howard. Text in French. Benoit-Levy (1880-1971) was a French architect and urban planner and theorist, founder and director of Association des Cité-Jardins de France. This book marks the beginning of a movement to introduce garden cities to France. This second edition is the first in a three volume set on gardens cities which form an expanded version of Benoit Levy's study of garden cities first published in 1904. [Ref: 20403] **£285**

**10. [HAMPSTEAD] CREWE, Marquess of [ introduction ] | Problems of Reconstruction. Lectures and Addresses, Delivered at the Summer Meeting at the Hampstead Garden Suburb, August, 1917**

London, T Fisher Unwin Ltd., 1918. 315pp. Cloth. Slightly faded on the spine. Arranged in four sections. I First Principles of Reconstruction 2 Reconstruction and Education 3 Social and Industrial Reconstruction 4 Arts and Crafts in relation to Reconstruction. Contributors included many luminaries of the day including J H B Masterman, Henrietta Barnett, Sidney Webb, Henry Clausen, C A Voysey, May Morris and many others. Fascinating assembly of liberal minds of the day. Faint stamp of Guildford Labour Party Bookshop probably contemporary with issue of the book. [Ref: 22119] **£85**



**11. [MAYVILLE] An Anglo-French Pleasaunce: Its Attractions and Aims.**

London, T. Fisher Unwin and L. Compagne de Mayville [Head Office in Calais] 1896 | 60 pp + 33 illustrations including one chromolithographic map and one double page imaginary bird-eye's view. Bound in gilt-decorated full brown morocco, with name "Mayville" and its coat of arms on the front cover. All edges gilt. End papers in gilt moiré paper. Edges and spine a little rubbed and end of fold out view a little crushed. This is a presentation book to promote a new seaside resort at the French Channel coast. The plan included proposals for a limited number of expensive villas, a large pier with a gothic pier- end building as well as golf, sea sports etc. The plan was never realised. Instead a French resort, with the name of Paris-Plage, Le Touquet was constructed. There are a number of line

illustrations by Phil May, the English caricaturist. He populated, the then imaginary town with imaginary people. The project was the brainchild of John Whiteley. [1843-1922] He was the British entrepreneur who inaugurated the Earl's Court Exhibition Grounds in West London in 1887. After four major exhibitions on the site (1887-1892), he moved to France and in partnership with Allen Stoneham, developed Touquet-Paris-Plage and created Hardelot-Plage. Whilst the Mayville project was not constructed this book is a very good source for its ambitious plan. Bookplate of Robin de Beaumont. [Ref: 22754] **£680**



**12. PARKER, Barry and UNWIN, Raymond | The Art of Building a Home: A Collection of Lectures and Illustrations**

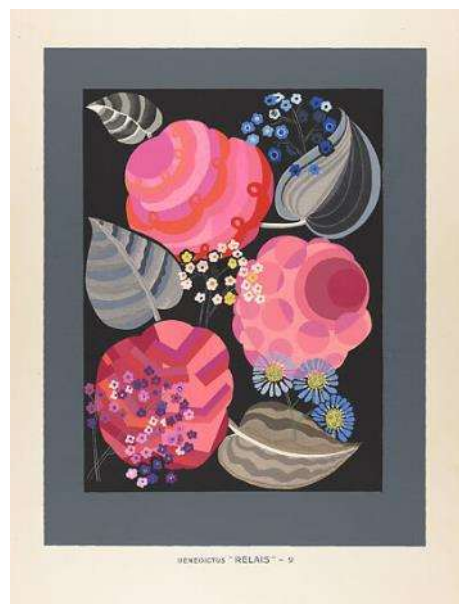
London, Longmans, Green & Co, 1901 | vi+ 133pp plus 68 b/w plates. Gilt decorated green cloth, slightly worn along spine and fore edge, but generally vg. Some discolouration to end papers but internally bright and clean. A collection of eight lectures on building and aesthetics, the role of art in constructing a home, on furniture and on designing small houses and cottages. Lovely Arts and Crafts style book production. First edition. [Ref: 22075] **£345**

## DECORATIVE ARTS

### Pochoir plates

#### 13. [ART DECO] BENEDICTUS, Edouard | Relais Quinze Planches Donnant Quarante-deux motif decoratifs, enluminure d'art de J Saude préliminaires de Y. Rambosson

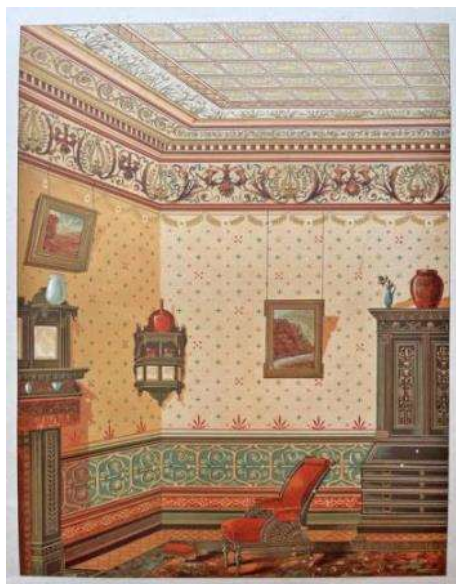
Paris, Editions Vincent Freal et Cie., 1930 | Title, 1pp text listing plates and 15 single side pochoir plates. Plate sizes 350x290mm, page size 473x374mm. folio. Complete as issued. White cloth covered boards with some external staining. Internally exceptionally good. Edouard Benedictus [1878-1930] was an artist, chemist, decorator, and composer. A talented maker of pochoir plates. Fabulous vibrant colours throughout. Hard to find as a complete portfolio. [Ref: 23162] **£3,800**



### Rare interiors portfolio

#### 14. DOUGLAS, W. [Drawn and published by] Douglas' Interior Decorations: [Interior Decorations Designed by McCulloch & Gow]

Glasgow, 21 Buchanan Street Glasgow, nd. [1888] | Loose leaf folio. Cloth covered boards with dark green cloth and lettered in gold on upper with title. Ribbon ties, all partially missing. 12 images of house interiors. Exotic coloured chromolithographs numbered 1,3,4,5,8,9,11,12 + 4 completely un-numbered images not duplicating any of the numbered images thus [2] [6] [7] and [10]. Duplicate images included for following plates; 1 [1 unnumbered] plate 3 [2 unnumbered] plate 4 [1 unnumbered] plate 5 [2 unnumbered] plate 8 [duplicate] plate 9 [1 duplicate]. Some images dusty. Paper borders of some images torn at edges but none of the images are affected by edge tears except the numbered version of plate 1. All illustrate room settings in the Aesthetic style. This is a portfolio of twelve views of interiors in the Aesthetic taste was published by the firm, no doubt, to advertise their work to potential clients. On the numbered plates give details of the production. With the caption "Drawn and Printed by William Douglas, 21 Buchanann Street, Glasgow." This address is also the address of Wylie And Lochhead. The un-numbered duplicates give no attributions to either designer or printer.



Hugh McCulloch (1843/4-1925) trained with renowned stained glass artist Daniel Cottier in London in the 1870s. (A number of decorators and stained glass artists who went on to employ or work with Mackintosh and his associates emerged from the Cottier stable.) After a brief house-painting partnership in Glasgow as McCulloch & McEwan, he opened his own stained glass business in late 1875 or early 1876. Charles Gow, whom he had known at Cottier's, joined him around 1880 as

McCulloch & Gow, 'artists in stained glass and tile painting' Set in Glasgow at the Hunterian. Only one other set of these lavish plates is recorded (Historic Environment Scotland Archives, Edinburgh)• McCulloch, Hugh; 1843/44-1925 Gow, Charles; 1847-1893. [Ref: 22982] **£3,400**

**Patented stained glass substitutes**

**15. McCaw, STEVENSON & ORR LTD. Illustrated Catalogue of Glacier Window Decoration: The celebrated substitute for Stained glass**



Belfast and London  
McCaw, Stevenson & Orr Ltd [incorporated in 1889] nd. 1895 | 72pp. Long 4to. Stapled lettered wrappers. Wrappers a little dusty and worn. Book 8 of a series? The firm were applying for a patent at the time of publication and were then sole manufacturers of this method of transferring

stained glass designs onto window glass. Period advertisements for the product were orientated to women at home for enhancing their houses with "artistic substitutes" for stained glass. John Stevenson, in 1871, set up in business in Belfast as a printer; his first partnership was dissolved after a few years, and in April 1876 he joined Alexander McCaw (d. 1878) and James Porter Orr in a partnership. The firm, known as McCaw, Stevenson & Orr, prospered and expanded into larger premises in Linenhall St.; much of the success of the Linenhall Works was based on products developed by Stevenson. He patented several inventions; in 1880, he took out a patent for coloured transparent window decorations with the trademark 'Glacier'. [Ref: 22854] **£425**

**16. MERMOD & JACCARD JEWELRY COMPANY | New Illustrated Catalogue of Mermod & Jaccard St Louis**

Published by the firm, nd. c1900 | 96pp illustrated with b/w line illustrations. 260x350mm. Decorated paper wrappers. Creased at lower corner and a little



bumped else good copy. Inner pages a little age browned. Image on upper wrapper is of the building occupied by the firm "the Grandest Jewelry Establishment in the World" The company was sited in one of the new structures in the river front district of St Louis. Most of these buildings were demolished in 1940 in the establishment of the riverside memorial park. In the catalogue the items featured include watches clocks, chains, solid silverware, opera glasses, umbrellas etc. Energetic in style but offering traditionally designed goods, many imported from Europe and re-stamped with the firms name. The firm became Mermod, Jaccard & King in 1905 which places the date of the catalogue as before 1905. [Ref: 23195] **£195**

**17. [RAKO TILES] ÚSTŘEDNÍ KANCELÁŘ PRO PRODEJ HLINĚNÉHO ZBOŽÍ: [Central Office for the production of ceramic and earthenware goods. Prague] Trade Catalogue**

Praha Havlickovo nám, c. 24 no date c.1915 | 45 coloured designs, single sided showing variant tile designs many with distinctive curved edges. These are for possible dado rails. Ribbon tied, 110x 155mm approximately. Covers slightly browned else very good. Rako tiles have found their way into many notable buildings, including the Art Nouveau style Prague City Hall completed in 1912, and [ later than this publication] Mies van der Rohe's iconic Villa Tugendhat.[Ref: 23205] **£180**



ceramic floors, walls and



**18. [SEVRES PORCELAIN] Fourmaintraux, Gabriel (1886 - 1984) Untitled original designs - double sided**

Desvres, Normandy, France. c1900 | Sheet size: 31 x 15 cm and w17cm x h31.5 cm. Two pages (recto and verso) of designs for 'Mushroom lamps' and lamp bases by French Ceramic Artist Gabriel Fourmaintraux for his factory, the Desvres Porcelain Factory. Very good. Gummed paper tape has been applied along the long edge on one side suggesting this has once been part of a sketchbook or similar. Pen and watercolour, with pencil annotations and with stamped design reference numbers (4737, 4687, 5334, 5336 and 5007). The top edge of the page records this as order number 01029. Options for different patterns and colour ways are included as well as pencil notes setting out the different prices for a bronze or porcelain base. Verso shows three lamp base designs with differing oil burner options. For almost 300 years, since it was produced under the patronage of Louis XV, Sevres porcelain has been highly regarded for its high quality and beautiful design. These watercolors are original designs created by the Sevres artist Gabriel Fourmaintraux and would have served both as a guide for the painters of the porcelain and as sales tools for prospective clients showing them the range of sizes, decorative motifs, and finishing available at varying prices. [Ref: 23167] **£425**

**18<sup>TH</sup> AND 19<sup>TH</sup> CENTURY ARCHITECTURE**

**19. CARISTE, Auguste | Notice sur l'état actuel de l'Arc d'Orange et des théâtres antiques d'Orange et d'Arles sur les découvertes Paris faites dans ces deux derniers edifices....**

Paris, Typographie de Firmin Didot Frères, imprimeurs de l'Institut, 1839 | 28pp + 9 single sided plates which are line illustrations and some lithographs. Plates have descriptive captions below. Stamp of H Revoil Architecte on title page. Marbled boards, cloth spine. Paste down title on upper board. 4to. Loosely inserted pencil plan and elevation of a theatre, possibly drawn by Revoil. Edges rubbed and some scattered foxing throughout. Work of surveying the antiquities of Arles and Orange, at the time when Mérimée created the Monuments service, by the architect Cariste, who oversaw the restoration of the l'arc d'Orange. Henry Revoil, Architect (1822–1900) renowned architect in church restorations and historic monuments as well as an author and surveyor of monuments. [Ref: 23121] **£200**

**20. [DEMOLITION SALE] Catalogue of External Materials and interior fittings of two houses 83 & 84 Pall Mall, London**

London, Messrs. Eversfield & Horne, 1850 | Catalogue of 10pp listing 81 item + 3 annotated, manuscript drawings on two pages with measurements, floor plans and some elevations of the buildings on Pall Mall. Drawings 124x70mm. Catalogue is 220x120mm. Sale comprised sound oak and fir timber in roofs, girders, floor boards, doors, sashes and wainscoting, skylights, statuary, marble and other chimney pieces, stoves and ranges. The items are pasted to a single piece of stiff card. Originally the two properties were one house. Ownership in the 17th century was in the hands of the Earl of Warwick who assigned then to Lady Ranelagh who employed Robert Hooke, architect, to make

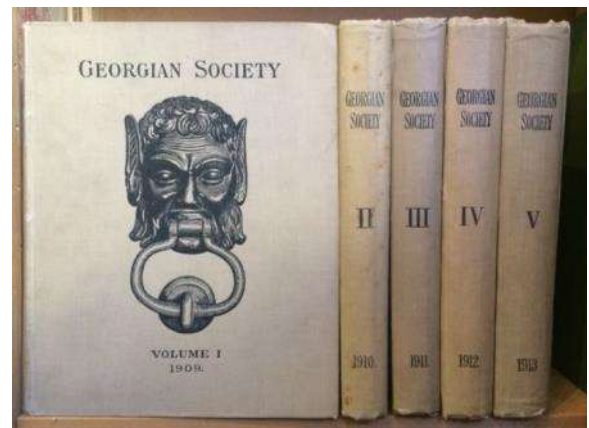
alterations. by the time of the sale they were divided into two. Later they were owned by Christie's establishing their presence for the first time in Mayfair and building into the garden at the rear. In 1846 both houses were in a decayed state and the Board of Ordnance offered to rebuild them if a new lease could be obtained. Both houses were demolished in 1850, and the new office building, designed by architect (Sir) James Pennethorne and built by William Holland, was completed in 1851 - this catalogue and particularly, the drawings, are a useful if small insight into these two important houses before they were demolished. The Ordnance Office later became known as the War Office. Rare. [Ref: 23158] **£650**



**Dublin - Georgian Design**

**21. (IRELAND) IRISH GEORGIAN SOCIETY RECORDS |The Georgian Society Records of Eighteenth-Century Domestic Architecture and Decoration in Dublin.**

*Dublin, Printed in Five Volumes for the Society at the Dublin University Press for Ponsonby & Gibbs, 1909-1913* | Illustrated with b/w photographic illustrations throughout. Volume 1 (1909): Limited Edition no138 of 300 copies. xixpp + 100 plates + 34pp; Volume Two (1910): Limited Edition no165 of 400 copies. 144pp 155 plates; Volume Three (1911): Limited Edition no 290 of 550 copies. 135pp 103 plates. Signed on the half title by H R Maunsell; Volume Four (1912): Limited Edition 285of 550. H R Maunsell stamp on half title. 125pp and 122 plates. Volume Five (1913): Limited Edition 342 of 600 copies. 129pp + 139 plates. A very good set, in linen covers lettered in black with door knocker designs to front covers. Some foxing on the text pages in all the volumes which is often the case. Possibly the most complete record published concerning Georgian architecture in Dublin. Bookplate of G H Maunsell in each volume. [Ref: 15403] **£2400**

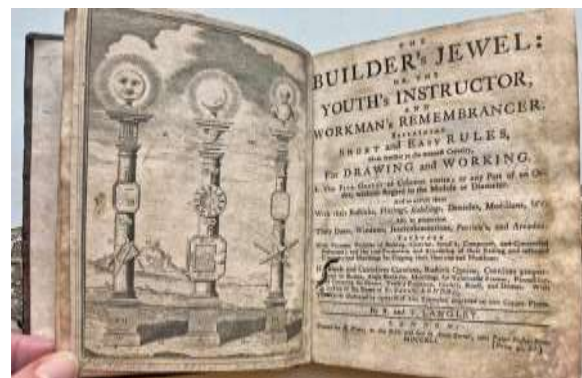


**James Wyatt's copy**

**22. LANGLEY, B[atty] and LANGLEY, T[homas] | The Builder's Jewel. Or the Youth's instructor, and Workman's remembrancer. Explaining short and easy rules, made familiar to the meanest capacity, for drawing and working.....etc**

London, Printed for R.Ware at the Bible and Sun in Amen Corner.... 1741 | Frontis. [1-3], 24pp 1-99 engraved plates. New spine with red spine label. [The late John Henderson, Bookbinder, York.] Pages browned and a few worm holes have penetrated to plate 11. On first blank is the signature of James Wyatt, Architect., dated 1789 with a note in a different contemporary hand referring to Heveningham Hall where he was working at the time. On verso of three plates are hand drawn sketchy architectural drawings with measurements. James Wyatt (1746-1813) designed the interiors of Heveningham Hall in Suffolk, England,

from 1781 for the then owner Sir Gerard Vanneck, the son of the estate's original purchaser. Sir Robert Taylor (1714-1788) was the primary architect of the hall although Wyatt in addition to interiors designed the orangery and some garden buildings. OCLC lists only 5 actual copies of this edition. Harris 431. [Ref: 20430] **£1,950**







**23. WATTS, William [1752-1851] The Seats of Nobility and Gentry in a collection of the most interesting and picturesque views engraved by W Watts from drawings by the most eminent Artists.**

London, W Watts, 1779 | Oblong 4to. 84 engraved numbered plates with descriptions. 4pp of subscribers at the end. Plate 1 has marginal worming. Contemporary black morocco, gilt decorated spine with title and rulings,

Rebacked to make a very good copy. One additional unnumbered plate after title page illustrating Pierremont del. by J Wright. [Ref: 20549] **£950**

### Modernism at home and abroad

**24. [BURNET] Modern Architectural Art: Sir John J Burnet & Partners**

Cheltenham, Ed J Burrow & Co. Ltd & Kingsway London, 1924 | 48pp illustrated with b/w plates. Some period ads. Stitched booklet Stiff card wrappers with printed titles. Spine split but internally very good. An album of Modern Architectural Art dealing with the work of John J Burnett, Thos. S Tait and David Raeside. The intention was to publish a second volume of Sir John Burnet's work as Volume II. From the office of Thomas S Tait, via a relative. Illustrations include Selfridges, The British Museum, The Institute of Chemistry amongst other projects. Lovely item. Scarce. 2 copies listed on World Cat. [Ref: 23203] **£250**



**25. COOK, Peter | Editor Art Net 1**

London, Art Net, 1975 | Stapled pamphlet. Decorated wrappers. 58 p. with b/w illustrations. In this n° 1 contributions of: J. Stezaker, C. Rowe, L. Leo, L. Krier, W. Alsop, P. Cook, R. Abraham, Joe Tilson etc... The Art Net gallery was set up by Peter Cook, the co-founder of Archigram, in late 1973 specifically to mount any kind of exhibition which he felt would not get a commercial airing. Initially established at the offices of Archigram in Covent Garden but moved to Bloomsbury in 1974. Hard to find. [Ref: 22649] **£250**



**26. COOK, Peter | Editor Net: Number Two of the Review of Architecture and Art**

London, Art Net, 1976 | Stapled pamphlet. Decorated wrappers. Unpaginated. [c.72pp] with b/w illustrations. In this edition, contributions are from Yvonne Dean, Alan Colquhoun, Peter Cook, Peter Matthews, Anton Christian and Warren Chalk amongst others.... Covers a little creased and bumped in places. Upper cover also has a label from the Royal College of Art pasted down in the bottom right corner. This book was part of a submission by Yvonne Dean to the RCA, along with 13 other items, which together formed part of an application to the

Design Research school. Today, contributor, Dean is Principal Lecturer within the School of Architecture and Design at the University of North London. She is also Director of the Low Energy Architecture Research Unit (LEARN) which since 1987 has established a reputation for the design of

passive solar buildings, day lighting and energy consultancy. She won the University of Westminster's National Woman Achiever in Building Technology award in 1994. From the collection of Yvonne Dean. Hard to find. [Ref: 22802] **£250**



**27. [FOCUS] Focus Volumes 1-4 All published**  
 London, Percy Lund Humphries, 1938-1939 | Vol 1. 61pp illus + 2pp ads. Lead article by Le Corbusier, Vol. 2. 96 + ixpp illus. With contributions by Moholy-Nagy, Gropius, Breuer, Wells Coates and others, Vol 3. 112 + xp illus with 1 colour and many b/w plates. On Aalto, Samuelly and J L Martin amongst others, Vol 4. 101 + xvii pp On Chermayeff, Carter, Fry, Giedion and ARP Committee. All spiral bound. Uniform cover design in variant colours by Oliver Cox. Volume 1 slightly scuffed on front wrapper and covers a little browned and spiral has horizontal break, Volume 2 has partially detached upper wrapper repaired with archival tape. Ownership in pen on two of the four copies. Verso of volume 3 has architectural sketches of plans in pencil. All four issues of this short lived publication document the work of the rising stars of modern movement architecture at the time. The journal was orientated towards student architects and those beginning in the profession and in the editorial of volume one states "We have set out to produce a journal where we can develop our still chaotic ideas on the foundations of

those built by certain older men (in age, not spirit) who early in this Century had realised contemporary problems." From the office of Conder and Casson. Scarce. [Ref: 15743] **£680**

**28. LE CORBUSIER | Une maison - un palais: A la Recherche d'une Unité Architecturale**

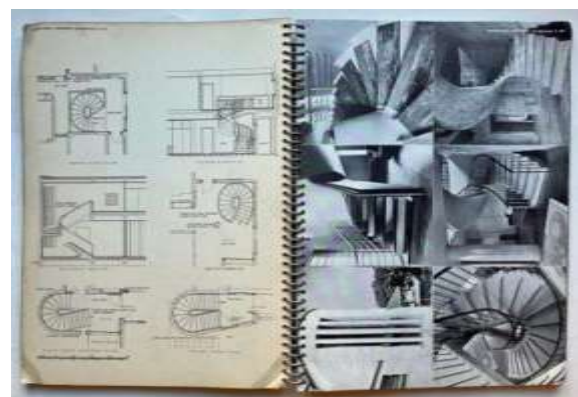
Paris, Cres et Cie, 1928 | 228pp : illustrations. Red cloth with gilt titles. Very good copy. French text. Part of the Collection de "l'esprit nouveau."  
 [Ref: 23223] **£140**

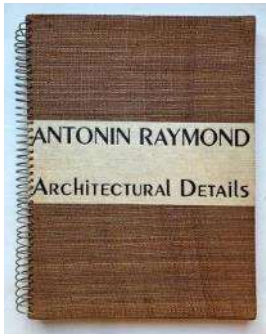


**29. (LUBETKIN & TECTON ET AL) CEMENT MARKETING COMPANY LTD Working-Class Residential Flats in Reinforced Concrete: Report on a competition for designs of blocks of working-class residential flats in reinforced concrete organized by the Cement Marketing Company Ltd.**

London, The British Portland Cement Manufacturers Ltd., nd. 1935 | 63pp illustrated with b/w plates, line ills etc. 4to. Decorated wrappers. Wrappers worn and scuffed along spine. Previous owner's signature on half title. The winning design is described and illustrated and was designed by Messrs B. Lubetkin & Tecton with Ove Arup. Other project also are described and illustrated including work by A P Lloyd, E W Collins and George Smith, (second place). Fascinating publication. Hard to find.  
 [Ref: 23193] **£125**

**30. RAYMOND, Antonin | Architectural Details**  
 New York & Tokyo, The Architectural Forum & Antonin Raymond, printed in Japan, 1938 | 116pp illustrated with line illustrations and b/w plates. Second printing. Hardcover burlap covered boards are spiral bound. Japanese paper end papers and title. Bright copy. Slightly bumped on Both authors' autographs are printed in facsimile on the title page, above rows of Japanese characters. The self-published Architectural details provides advice for the designer using

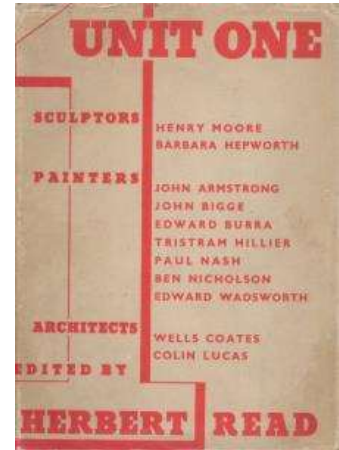




Raymond's work and philosophy as a model. In interior plans and elevations, sectional drawings, and examples of dramatic self-supporting staircases, concrete proves an optimal material in both aesthetics and durability. Raymond's talent for incorporating traditional Japanese elements. [Ref: 23008] £450

**31. READ, Herbert (ed.) | Unit One: The Modern Movement in English Architecture, Painting and Sculpture**

London, Cassell, 1934 | 124pp, 67 plates b/w photographs. 4to. Yellow cloth with brown lettering in dw which is preserved in good order in a glassine wrapper. Signature of former owner on front end paper. Iconic book which covers work by: Sculptors: Henry Moore, Barbara Hepworth; Painters: John Armstrong, John Bigge, Edward Burra, Tristram Hillier, Paul Nash, Ben Nicholson, Edward Wadsworth; Architects: Wells Coates, Colin Lucas. Unit One was a British grouping of Modernist artists founded by Paul Nash. Despite its brief period of activity, the group is regarded as influential in establishing the pre-eminence of London as a centre of modernist and abstract art and architecture in the mid-1930s. [Ref: 22073] £850



**32. [WIESENHOF] GRAFF Werner, [Editor/Herausgegeben] Innenräume; Raume und Inneneinrichtungs-gegenstände aus der Werkbundausststellung "Die Wohnung", Insbesondere aus den Bauten der Städtischen Weissenhofsiedlung in Stuttgart**

Stuttgart Akad Verlag Dr. Fr. Wedekind & Co 1928 Innenräume; Raume und Inneneinrichtungs-gegenstände aus der Werkbundausstellung "Die Wohnung", Insbesondere aus den Bauten der Städtischen Weissenhofsiedlung in Stuttgart. 168pp illustrated with b/w plates. 4to. Lettered wrappers. A little worn and chipped at head and base of spine. The book features rooms and interior furnishings from the Werkbund exhibition "The Apartment", especially from the buildings of the Städtische Weissenhofsiedlung in Stuttgart [Ref: 23226] £225



**GARDENS**

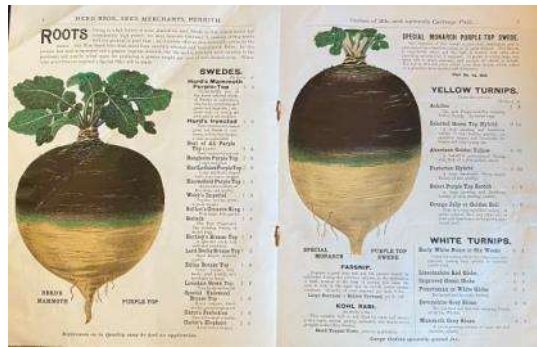
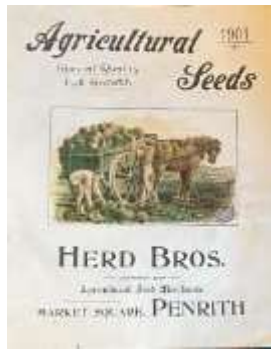
**33. HARTLEY, S. & CO HORTICULTURAL BUILDERS | Trade Catalogue Conservatories; Forcing Houses; Vineries; Studio etc, Greenhouses; Garden Frames; Motor Houses etc.**

The Wharf, Shipley Yorks, S. Hartley & Co., nd c1929 | 24pp illustrated with b/w line ills and photo litho illustrations of completed schemes. First 8 pages illustrated schemes - winter garden at Hazelhurst, Roundhay Leeds, greenhouse ranges at Baildon for Mr Waddelive of Langley and others for Penarth Nursery. Remainder of the booklet gives designs with dimensions and prices. Decorated wrappers. Ancient fold mark down centre else very good copy. [Ref: 23142] £48

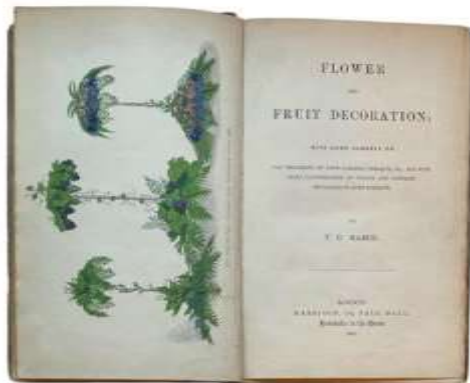


**34. HERD BROTHERS PENRITH | Agricultural Seeds**

Penrith, Published by the firm, 1901 | 8pp seed catalogue with large format colour illustrations of root vegetables, clover and grasses etc. Price list of seeds supplied for each product Stapled. Staples a little rusty Evidence of old folds. Good. Nurserymen in the 1900s who by the 1930s were also operating as florists. [Ref: 23184] £60



**35. MARCH T.C. | Flower and Fruit Decoration: With Some Remarks on the Treatment of Town Gardens, Terraces, &c; And With Many Illustrations of Colour and Contrast Applicable to both Subjects**

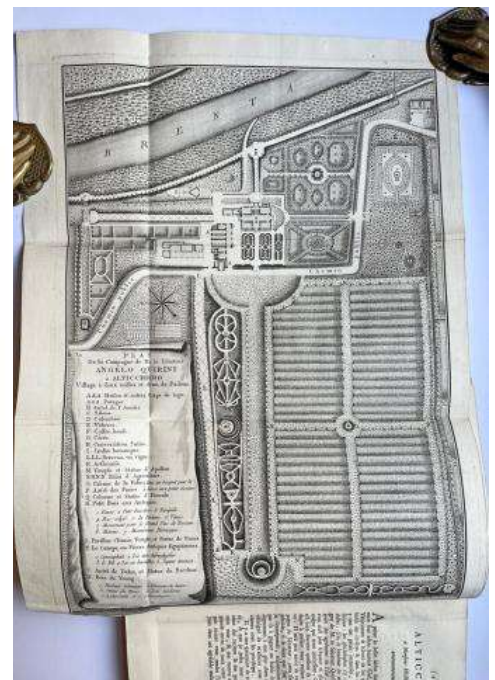


London, Harrison, 1862 | vii + 112pp + 16pp publisher's ads. Colour frontispiece, b/w & col. illustrations including some text illustrations. 8vo. Cloth spine. Original illustrated paper covered boards. Practical guide to producing flower and fruit arrangements, alongside a chapter on the laying out of small town gardens, terraces and verandas. Superb coloured illustrations designed to show

how to juxtapose colour in arrangements for table decorations and further images showing how to plant flower borders to greatest effect in small gardens. The book also refers to 10 images which could be purchased separately from Mr March's photographs of flower and fruit arrangements. He had been involved in competitions for table decorations held by Dobson and Pearce, St James's Street, London in 1861 and also the Great Exhibition arrangements of 1862. Hard to find. [Ref: 20746] £775

**36. [PADUA] [WYNNE (GIUSTINIANA, COMTESSE DE ROSENBERG)] | Altichiero, par Made. J.W.C.D.R.,**

Padua, 1787 | Engraved vignette title, [8] + 80pp + large folding plan (mounted on linen) and 29 plates, 2 folding, title lightly soiled, nineteenth century half calf, spine ruled and titled in gilt, slightly rubbed, marbled boards. 4to, Gilt spine lettering, this and the text is in French. "A detailed description of the house, garden and outdoor sculpture collection belonging to the Venetian intellectual Angelo Quirini (1721-1796), at Altichiero, near Padua". The house was modest but the surrounding garden was altogether more ambitious, incorporating parterres, garden temples, a "coffee house", a Chinese pavilion, and a "Bois de Young" (an area of semi-wild woodland inspired by the English poet Edward Young's Night Thoughts), and



most importantly, Quirini's collection of sculptures. The garden and villa were located on the banks of the Brenta River, near Padua. Unfortunately, very little is left of this historical garden which later fell into neglect. Its sculptures were dispersed, with the result that the book is a record of what was one of the most significant Italian gardens of the enlightenment period. The text was by the charismatic Anglo-Italian heiress Giustiniana Wynne (1737-1791), widow of Count Orsini Rosenberg, Austrian ambassador to the Republic of Venice, but previously the mistress of both Andrea Memmo (diplomat and patron of the arts), and Giacomo Girolamo Casanova. Dedicated to William Petty, Marquis of Lansdown. [ He is better known under the title of Earl of Shelburne.] The description of the garden is written in the form of a letter to the painter Jean Huber. He knew Quirini personally and also Voltaire. The plan of the garden layout is exceptional as a record of this lost marvel.  
<https://holywatcher.narod.ru/garden.pdf> [Cicognara 4083; not in Berlin Kat.], [Ref: 23061] **£1,500**

**37. [SAND, Maurice] Untitled Diorama of the Gardens at Villa Aldobrandini, Frascati (nr. Rome)**

**French c.1860's** | Glass fronted box w170 x h140 x d65mm. Box exterior covered with hand marbled paper. Some water marks to the top edge of the box and a bit age worn, else very good. Glass surround is made of embossed tin (or silver). Diorama shows a scene made up of a print in the background two figures and some 'rocks' made out of wood and in the foreground, some collaged trees (cut out from a print) along with moss, lichen and small leaves (?). The two figures and a pheasant in the bottom left foreground are hand painted, and likely flat tin. The background print shows the 'Garden Monster' or Etruscan Mask which was carved into the rocks in the gardens at the Villa Aldobrandini, at Frascati near Rome. A seated woman figure can just be identified hidden beneath a section of moss, on the left side of the mouth of the 'Monster.' The background print which has been hand coloured is by Maurice Sand. Jean-François-Maurice-Arnauld Dudevant, known as Baron Dudevant but better known by the pseudonym Maurice Sand, was a French writer, artist and entomologist. His mother was George Sand (1804-1876) known for her manuscript "Les Jardin en Italie" which was written in 1855. This print appears on page four of her manuscript. [Various later versions (with a different figure) of the image date from 1856 and the 1890's.] The paper used as the outer wrapper and the link with Maurice and George Sand indicate this is likely a French-made item. A unique and exceptional piece in near fine condition.

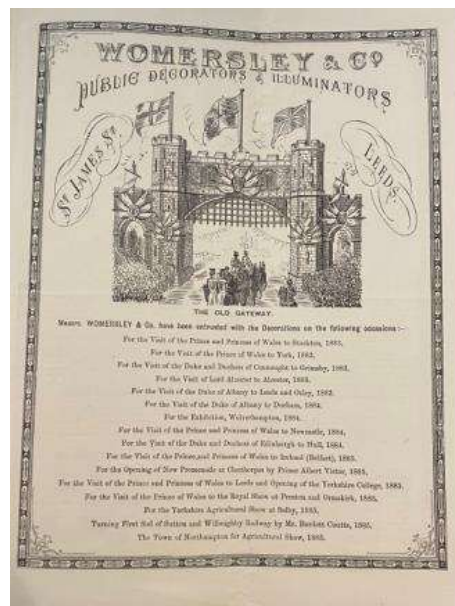


The Gardens at the 16th century Villa Aldobrandini are made unique by a grandiose nymphaeum of 2500 square meters, with fountains and terraces on multiple levels. Here, classical statuary of Atlas, Neptune, Pan and Venus are displayed in rusticated niches. The tufa rock below Atlas contains a

carved grotesque monster, an element of surprise, that is repeated in the huge tragic mask carved into the rock-work and captured in Sand's striking etching. [Ref: 22979] **£1,350 [+ VAT]**

**38. WORMSLEY & CO., LEEDS. Trade Catalogue.- Womersley & Co., Leeds. Municipal Decorators & Illuminators, Triumphal Arches...Pavilions...Public Parks &c Illuminated, Pyrotechnic Displays...**

49-53 St James Street, Leeds, Yorkshire, England, 1885 | Unpaginated. 8pp illustrated with b/w plates and with chromolithographed upper wrapper design and also lower wrapper. 270x210mm. A splendid brochure advertising the firm's services using tents, crystal chandeliers, lanterns, flags, banners, floral displays, fireworks etc. These are illustrated as b/w drawings of fabulous structures. A list of events decorated include several royal visits to the north and the midlands, openings of buildings and exhibitions, agricultural shows, and a Venetian Fete for the Middlesbrough Jubilee including an illustration of a Moorish arch. Upper wrapper acts as an advert for the products of the firm whilst the lower wrapper illustrates flags and festoons centred on a V for Victoria with an image below of St James Street Leeds. Shows the way public events were historically staged. Very good. Has been folded in the past and shows faint evidence of that. [Ref: 23051] **£250**



**EXHIBITION DESIGN & WORLD FAIRS**



**39. FREY, Max [1874-1944] | Poster: Jubiläums-Ausstellung für Kunst und Kunstgewerbe Karlsruhe 1906**

510x770mm portrait. Conserved and mounted on Japanese paper, Small tears repaired on right hand side. Poster for an exhibition held July to October 1906 celebrating arts and crafts movement work and which was held in Karlsruhe. By the time the exhibition took place Frey was working in Dresden but had been a student at the Arts and Crafts school in Karlsruhe and this commission may have come out of his associations with the School. Lovely poster in vibrant colours and influenced by Art nouveau design with the lettering on this poster is reminiscent of the work of Peter Behrens.

[Ref: 20291] **£480**

**40. [The Great Exhibition, Crystal Palace 1851] Union of Graphic Art Engraving with A Brief Survey of the Objects of Graphic Art exhibited at the Imperial and Government Printing Establishment at Vienna, at the London Exhibition**

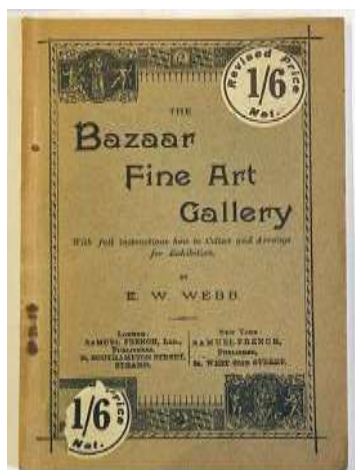
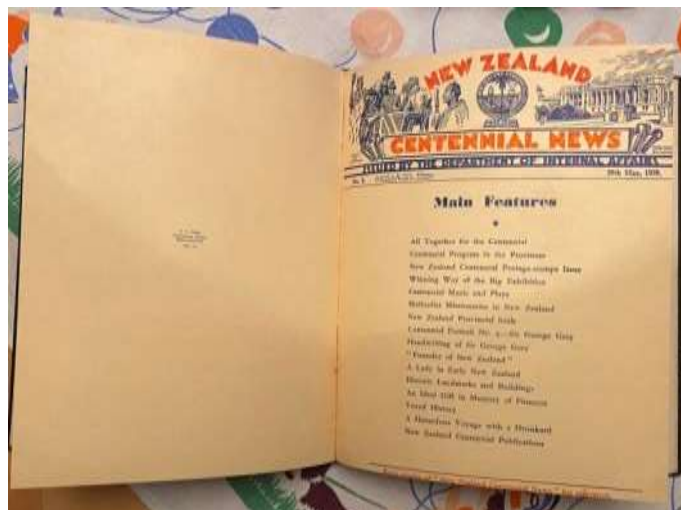
London, Samuel Bagster and Sons, 1851 | Engraving 140x210mm advertising the Union of the Graphic Arts, executed by the Imperial and Government Establishment in Vienna 1851: a delightful engraving - slight water mark stain on one margin else good.

Illustrates putti representing aspects of printing set in gothic arches. Two colour lettering. Loosely inserted into the Brief Survey of Objects of Graphic art 16pp 8vo stapled Original printed wrappers. A very bright copy. Together these two items provide an important perspective on the production of this pioneer printing establishment under the direction of Alois Auer [ 1813-1869] Austrian printer, inventor and botanical illustrator. At the Great Exhibition, the display included Auer's collection of the Lord's Prayer in 608 languages, chomolithography and photography by Paul Pretsch. See Bigmore & Wyman 111 p13 which cites only an edition of 1852 with a variant title page to this one. From the collection of Robin de Beaumont. The pamphlet includes his small ownership ticket pasted to the verso of the upper wrapper. Lovely item. The advertising engraving was probably a "give-away" at the exhibition stand. Scarce. [Ref: 22914] **£185**



**41. [NEW ZEALAND CENTENNIAL EXHIBITION, 1940] New Zealand Centennial News**

The Department of Internal Affairs numbers 1 -15: All published. Date range is 15th August 1938 to February 1941. This series consists of a complete set of the New Zealand Centennial News publication created to provide information about the progress of the New Zealand Centennial Exhibition, held at Wellington 1940. before, during and after the event. Bound in rexine binding with spine label. The issues have the covers bound in to the volume. Very good indeed. Pictorial bookplate of G[oeffrey] [ & N[an] Ingleton, The Grange, Parramatta on front paste down. Variant numbers of pages in each issue with b/w photographs in each. Much on the history of New Zealand to stimulate interest in the past but like many Worlds' Fairs publications this appear to marginalise the Māori history in favour of focus on European settlement. Scarce [Ref: 23161]. **£400**

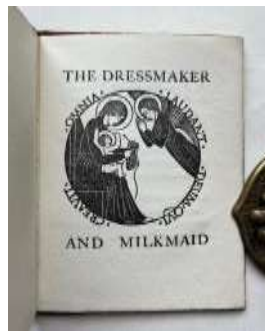
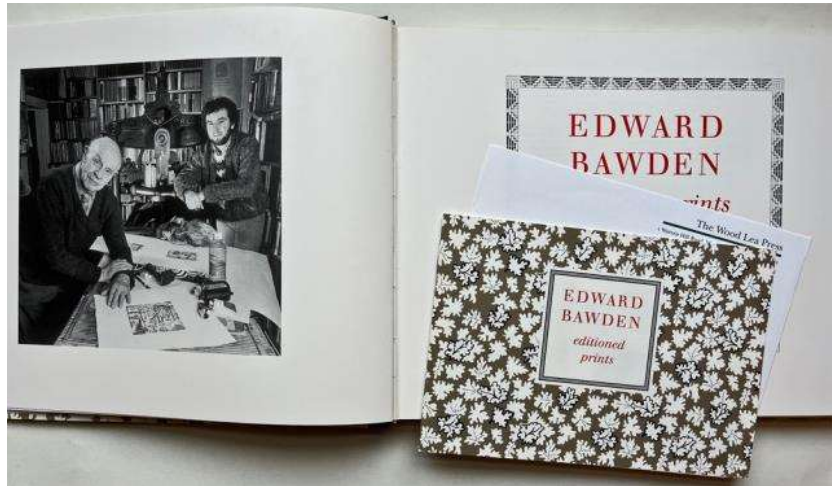


**42. WEBB E. W. | The Bazaar Fine Art Gallery: with full instructions how to collect and arrange for exhibition**  
 London and New York, Samuel French Ltd., No date. c1891 | 31pp.  
 Wrapper with decorations and fine lettering. Stapled. Small 8vo.  
 Good copy. A curious publication with one page preface on how to assemble then arrange items in an exhibition and the remainder giving examples of items and how to cite them and their artists. Specifically produced to aid those involved in fund raising bazaars and advocating a separate room and captions to catch the imagination. 3 copies listed on The Library Hub. From the collection of Robin de Beaumont with his monogram ex-libris label. [Ref: 22819] **£145**

**BOOK ARTS**

**43. [BAWDEN] GREENWOOD, John | Edward Bawden Editioned Prints**

Woodbridge, Suffolk, The Woodlea Press, 2005 | 134pp illustrated with colour and b/w plates. Long 4to. Fine in slipcase. Loosely inserted prospectus for the book included. One of 450 copies of the standard edition printed in landscape format by J. W. Northend Ltd., Sheffield. [Ref: 22953] **£200**



**44. [GILL, Eric] PEPLER, H. D. C. | The Dressmaker and milkmaid**

Ditchling, St Dominic's Press, 1926 | The "Small Rhyme Sheets". These two each folded once. No. 16, Dressmaker; No. 12, Milkmaid. Reduced Eric Gill engraving. 16mo. Bound in half calf with handmade paper covered boards. Arts and crafts style binding. Taylor and Sewell, B39 & B35. originally issued in string tied light grey wrappers. [Ref: 22249] **£250**

**45. [HISTORICAL CHARTS] The Book of Knowledge Historical Charts: The Geographical Chart and Historical Chart,**

London, Waverley Book Company Limited, printed by John Waddington, Designed by Wingfield Publications Ltd. no date c1950 | Two circular charts, diameter 320mm, issued in full colour with moving parts. In stiff card posting box which is worn and split at edges. Magical charts. The Geographical chart features a map of the world with resources noted alongside principal features, populations, rivers, the Capital etc which link to individual countries as you turn the dial. Verso of the dial provides a key to the Countries of the World. The historical chart provides information on the British Monarchy. Turning the dial reveals in a cut out window basic facts about Monarchs by dates. The dates are shown on the outer dial. Lovely educational item. Waverley produced an 8 volumes encyclopaedia for children with the title "The Book of Knowledge." These charts however stand alone as an item. [Ref: 23144] **£120**





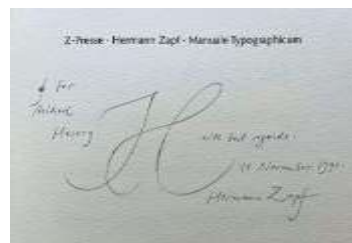
## Roycroft Shop

### 46. GOLDSMITH, Dr Oliver | The Deserted Village to which is prefaced some notes concerning a Little journey to "Sweet Auburn" as written by Elbert Hubbard.

New York, Aurora Village, Roycroft Shop, 1898 | Number 18 of 470 copies. Dickinson's wove paper 290 × 230 mm. Green half cloth spine. Paper covered boards. Title in gilt on the green cloth on upper board. Some slight wear to corners, head and base of spine else a very good copy. The Deserted Village was the first



book which W.W. Denslow designed for the Roycroft Press. Denslow's 19 initials are outline letters, embellished with scrollwork, spiral flourishes, shamrocks, and other ornamental devices throughout the book. These letters are printed in green and filled in by hand with gold paint. Designer and illustrator W.W. Denslow, writer and publisher Elbert Hubbard and fantasy fiction author Frank L. Baum are linked in this particular copy as Denslow illustrated Baum's Wizard of Oz, along with other titles by him, and it is Baum's photograph which is loosely inserted in the book – perhaps it was his copy? An interesting connection nonetheless. This copy is one of the first 40 copies. Others amongst this first 40 were all reputedly produced as extra illustrated editions, although this copy does not have illustrations beyond the decorated letters by Denslow. Hubbard began his own printing concern, the Roycroft Press in 1893, inspired by William Morris's Kelmscott Press. [Ref: 22692] £480



### 47. ZAPF, Hermann. Manuale Typographicum: 100 typographical arrangements..

New York [ Published by D Stempel AG, Frankfurt am Main, 1954 ] Z-Presse, 1968

Fine in slipcase. Numbered edition. No 30. Velum Spine, silk lettered boards. In grey custom made slipcase. Fine. Signed dedication copy to Michael Harvey from Hermann Zapf, dated 1991. [Ref: 21408] £295

## PHOTOGRAPHY

48. [GRAND TOUR PHOTOGRAPHY] Photograph Album 1875. Recorded in 75 original sepia photographs is tour of Italy. Dark green cloth with black ruled lines on upper board. 310mm x 378mm. A.e.g. Exceptionally good, and well composed, album although binding shows slight signs of wear particularly at corners, base and top of spine. Faint ink stain on upper board. Internally very good indeed. Photographs pasted onto stiff card pages and annotated with location and date in a neat hand in pen and ink beneath [most of] the images. The album opens with a large 220x300mm photograph of Milan Cathedral, 1875. The next image is Cologne Cathedral x 2 exterior and interior. Thereafter, the remainder charts the tour commencing at Cannes in France. Most photographs are 200x1150mm and mounted two per page. They include, Views of Cannes, Monaco, & Mentone, Genoa - monument to

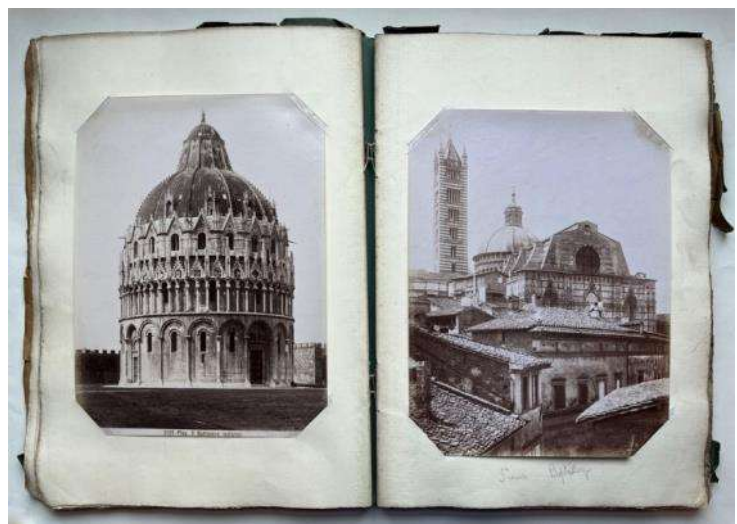


Christopher Columbus + View of City, Cathedral (And Campanille) at Pisa + interior, The Baptistery at Pisa + Interior (Pulpit), View of Bagnoregio, Lazio, Italy (Site of Battle of Monte Cassino), Siena with Torre del Mangia, Cathedral, Siena + Interior [x3], Cathedral, Orvieto + Door of Cathedral, Rome

[x25], View of Tivoli, View over Naples [x2], Naples Harbour, Mount Vesuvius including lava flows, Islet of Nisida, Baiae (N of Naples), San Martino Church, Naples, View of Sorrento, Pompeii [x4], Salerno, Vietri, Amalfi [x2], Florence [x4], Venice [x5], Ballaggio and Lake Como. Some photographs embossed with the stamp of Lombardi and others with Naya's. From the collection of Antony Curtis Wolffe, Architect, Scotland. Possibly from his family's collection. Wolffe was of German descent, and lived in Germany until 1928. he was the child of a prominent Berlin Jewish family. [Ref: 23229] **£400**

**49. [Hand Made Photograph Album] ALANARI, BROGI et al... Some Tuscan Churches**

nd c1880 | 110 albumen prints commercially produced for the tourist trade of churches, monuments, townscapes etc. in Tuscany including Pisa, Bologna, Siena etc. with art works, church interiors etc. All mounted on art paper and made into a handmade book. Pencil captions below most of the images. Name of owner on upper wrapper inscribed Alfred Pounder. [Author] First page mount a little foxed else very good throughout. Images are uniformly 190x270mm and in very good condition. [Ref: 19651] **£365**



**Signed**

**50. BLAKEMORE, John | Inscape**

London, Zelda Cheatle Press, 1991 | 57 b/w plates, long 4to, decorated wrappers. Signed by the author. Includes an essay Intimate Rituals: the biographical landscape of John Blakemore, 1971 to 1991 by Val Williams. Signed by Blakemore on title page. [Ref: 14121] **£165 [Pictured Right]**



**First American edition**

**51. BRANDT, Bill | Shadow of Light A collection of photographs from 1931 to the present with an introduction by Cyril Connolly and notes by Marjorie Becket**

New York, A Studio Book, The Viking Press, 1966 | First American edition published in parallel with the British first edition published by Thames and Hudson. 12pp + 128pp photographs mostly in black and white. Captions to the photographs listed at the back of the book. 4to. Very good in dust wrapper which has a tiny repair on the fold into the rear flap of the dust wrapper and small chip at head of spine and upper corner. Fabulous anthology of Brandt images. Brandt started his career in photography as a pupil of

Man Ray in 1929 and moved to London as a freelance photographer in 1931 to become a leading photographer of the British scene adopting a photo method employing deep contrasts between shadows and light to produce his distinctive images. A lovely copy of this book that contains a carefully curated selection of Brandt's photographs. [Ref: 22693] **£220**

### **52. HENNESEY, Val | In The Gutter**

London, Quartet Books, 1978 | 95pp b/w + colour illustrations. Small 4to. Perfect binding, illustrated wrappers. Very small chip to the head of the spine otherwise an almost fine copy. Photographic study with an interesting point of reference. The book was conceived after the publishers were researching imagery for a book on world religions. The adornments of different ceremonial dress reminded them of portraits of contemporary punks. The book contains images of punks juxtaposed with images of people wearing traditional dress. Accompanying text written by Val Hennessey. Excellent piece of fashion research material. Uncommon. [Ref: 18238] **£265**



**Signed**

### **53. PARR, Martin. A8**

JMP, Journal, 2005 | 36 pages. 28 colour photographs. Designed by Thomas Manss & Company. Newspaper h397 x w283 mm A commission for John McAslan the architect, who invited Parr to photograph the surroundings of his childhood haunts between Dunoon and Port Glasgow. Fine. Signed copy. [Ref: 23199] **£110**

### **Early Strand exhibition**



### **54. [STRAND, Paul] NEWHALL, Nancy and STRAND, Paul | Paul Strand Photographs 1915-1945**

New York Museum of Modern Art, 1945 | Good copy in slightly worn and chipped dust wrapper illustrated with a Paul Strand image. 40pp Small 4to. Superb black and white images throughout. To accompany an exhibition held April 25–June 10, 1945. 172 numbers in the show covering Mexico, New Mexico and Vermont series amongst others. [Ref: 20342] **£75**

---

#### **Ordering:**

1. Ordering: Orders may be placed by phone, e-mail or letter. 24 hour answering service
2. Payment: On receipt of books or pro forma invoice if sent. Maestro, Visa, MasterCard and American Express and PayPal accepted.
3. Overseas customers may pay by Sterling draft or by direct transfer to our bank account.
4. Dispatch & postal charges: At cost. UK parcels sent by Parcelforce 48 hour service or Royal Mail unless otherwise requested. Charges rarely exceed £10.45 for any service. Overseas parcels sent airmail unless otherwise requested.
5. Care has been taken to describe the books accurately. All books are in good condition unless otherwise stated. Books can be returned if found to be unsatisfactory or defective. Notice should be given within 7 days.
6. Additional images of any item on the list can be sent on request.

**If in York please visit our shop. We are open Wednesdays-Fridays 10.00am – 5.00pm and most other times by appointment.**