

JANETTE RAY BOOKSELLERS

8 BOOTHAM, YORK, YO30 7BL,
UNITED KINGDOM

T: +44 [0] 1904 623088

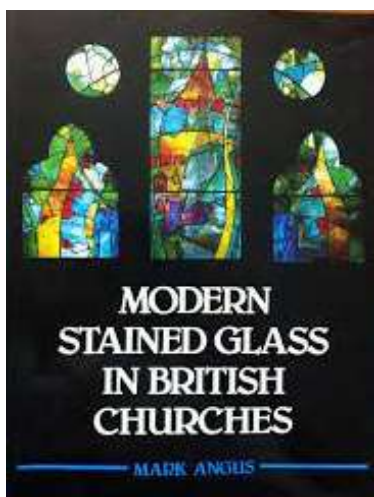
M:0780 394 1307

E: books@janetteray.co.uk

20th CENTURY CHURCH
ARCHITECTURE, ART, FIXTURES
AND FITTINGS: FOCUSING ON
SMALL PUBLICATIONS:

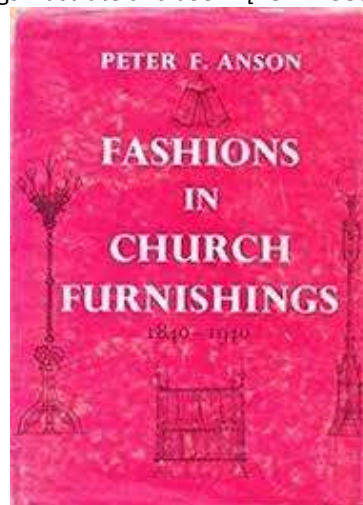
OCCASIONAL LIST 5

1. **ANGUS, Mark. (Foreword by John Piper)**
Modern Stained Glass in British Churches
Oxford A.R. Mowbray & Co. Ltd. 1984 120 pp.
Colour ills throughout. 4to. Decorated cover, in
protective sleeve. Vg. Detailed guide to modern
stained glass design and techniques across
England. Considers functional and architectural
context of glass. Presented in series of short
essays. Includes selected gazetteer. Foreword by
John Piper. [Ref: 16197] **£22**



2. **ANSON. Peter F, Fashions in church
furnishings 1840-1940**
London Studio Vista 1965 384pp illustrated with
18pp plates and 99 text figures. Small 4to. Cloth.
Good in slightly worn dw. Important study on the
interior decoration of churches spanning
different periods. Includes chapters on individual
architects and designers including Pugin, Scott,
Sedding, Comper et al. Peter F Anson (1889 -
1975) writer and artist and also wrote of

Scotland. He initially joined an Anglican religious
community but was later accepted into the
Roman Catholic Church. His own exquisite
drawings illustrate this book. [Ref: 17580] **£48**



3. **[ANSON Peter] YELTON, Michael Peter Anson:
Monk, Writer and Artist: An Introduction to his
Life and Work**
London Anglo Catholic History Society 2005 72pp
illustrated. Wrappers. Like New. [Ref: 20313] **£18**

4. **BOSSANYI. Jo and BROWN. Sarah (eds.) Ervin
Bossanyi: Vision, Art and Exile**
Reading: Spire Books 2008 295pp with over 300
photographs, the majority in colour. Fine in navy
blue cloth boards with gilt lettering down spine,
in decorated dust wrapper. 4to. A collection of
essays on this elusive but prolific Hungarian artist
(1891-1975) including scholarly studies and
personal reminiscences. Tracing his life and
career against the turbulent background of
twentieth century Europe, this collection explores
the richness of his legacy. A valuable addition to
the study of 20th century stained glass and
ecclesiastical design. [Ref: 17222] **£60**

5. **BURMAN, Peter. & NUGENT, Kenneth. Editors
Prophecy and Vision**
Committee for Prophecy and Vision, self-
published 1982. 78pp, c70 illustrations (some
colour) Wraps Vg. Useful collection of essays on
the commissioning of new church furnishings.
Foreword by Burman and Nugent. [Ref: 1175] **£10**

6. **BUTLER, John F. The Holiness of Beauty**
London The Epworth Press 1961 46pp Small 8vo.
Wrappers overprinted with red lettering, vg
indeed. Perfect Bound. On Christian Art especially
within the Methodist Church. Dedication copy
from the author to George Gaze Pace, architect,

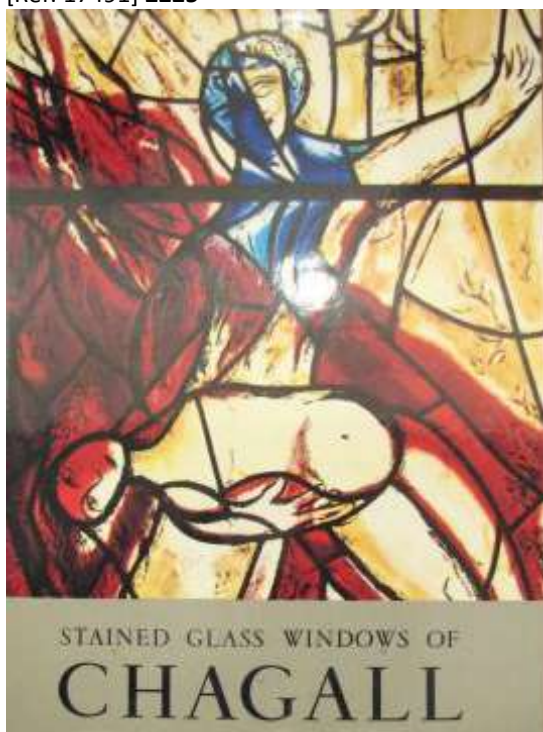
initialled by the author on end paper. A lovely association item. [Ref: 10566] **£18**

7. CAUSTIN BROS LTD. Church Metalwork: Church Brasswork + Church Silver Aumbry Safes and Tabernacles

London, Ultra Press Limited. 1977 Two volumes. 40pp (Church Brasswork) and 44pp (Silver). bw photographs of products. Decorated matching metallic card covers. Bronze very good indeed, Silver with crease in metallic cover but otherwise very good as well. Pair of very attractive trade catalogues with loose inserted price lists. Modern ecclesiastical fittings such as alms dishes, altar candlesticks and crosses would have been in high demand during the reordering of church interiors. [Ref: 13615] **£45**

8. [CHAGALL] MARTEAU. Robert, The Stained Glass Windows of Chagall 1957 - 1970 With an afterword by Charles Marq

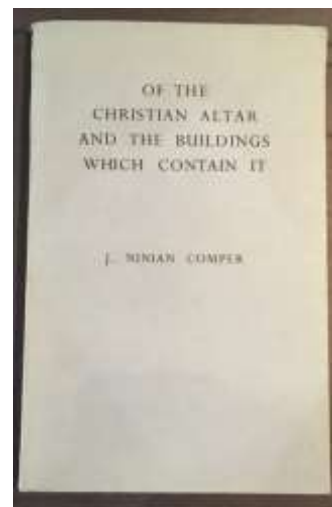
New York, Tudor Publishing Company 1973 159 pp. Colour plates. Large 4to (9.1 x 6.6 x 1.1 in). Cloth boards with gilt lettering, in decorated and laminated dust wrapper, in protective box sleeve. Fine. First U.S. edition. A complete record of the stained-glass windows made by Marc Chagall between 1957 and 1970. Fabulous illustrations. [Ref: 17491] **£225**



9. COMPER, J. Ninian. On the Christian Altar and the Buildings which contain it

London SPCK 1950 With a preface by the Bishop of London. Frontispiece in b/w showing altar

piece from St Petroc's Minor, Cornwall. 71pp. Stiff card wrappers. Good copy. Obituary from 30 December 1960 pasted onto front end paper. On half title original autographed letter signed from Comper, [creased]. This is addressed to a person requesting an enlargement of the frontispiece illustration from the essay. On headed paper with address as The Priory, 67 Beulah Hills SE19. Comper went there in 1912 at this time having his Studio at nearby 228 Knights Hill, West Norwood. It was demolished to make way for suburban houses in the 1960s. [Ref: 21109] **£80**



10. [COMPER] SYMONDSON, Anthony and BUCKNALL, Stephen. Sir Ninian Comper

Spire Books and the Ecclesiological Society 2006 336pp illustrated with b/w plates. Small 4to. Decorated wrappers illustrating Comper's church interior at St Mary's Wellingborough. Comper (1864-1960 was one of the great Gothic Revival architects. The study includes a complete gazetteer of some 600 entries and a reprint of Comper's influential essay "Atmosphere of a Church". [Ref: 20663] **£48**

11. (COMPER) SYMONDSON Anthony The Life and Work of Sir Ninian Comper: The Last Gothic Revivalist 1864-1960

London RIBA Heinz Gallery 1988 34pp illus with b/w plates and including a bibliography of Comper's writing. Square small 4to. Wrappers. Good copy of this little book to accompany an exhibition but one essential for understanding his life and work. [Ref: 21108] **£20**

12. [COVENTRY CATHEDRAL] The Arts & Windows in Coventry Cathedral

Coventry Cathedral Council. nd c1961 36pp. Stapled guide book. Green decorated wrappers. With colour illustrations throughout. Useful survey for vestments, objects, windows, sculpture etc. [Ref: 21233] **£10**

13. [COVENTRY] The West Window of Coventry Cathedral designed and engraved by John Hutton

Leamington Spa English Counties Periodicals Limited nd 28pp illustrated with b/w plates. Wrappers, black and white image on upper wrapper. Detailed account of this particular window in the Cathedral with a note on the maker. Postcard addressed to Peter Burman unsigned is loosely inserted. [Ref: 21454] **£20**

14. CROUCH, Joseph and BUTLER, Edmund. Churches, Missional Halls and Schools for Non-Conformists



Birmingham, Buckler & Webb 1901210pp + 38 b/w plates on single sided pages. Gilt lettered green cloth with arts and crafts style gilt lettering on cover. Signed by James Lancaster December 1902 and John Roberts on front end paper. Includes period adverts on verso of free end papers and half title for as the 1st few pages. Focus on church fittings and temporary buildings including Humphreys Limited (Iron Roofing) Diespeker and Co (Marble and Venetian Glass etc). Ardean Ecclesiastical Furniture Doulton Ware, Terra Cotta etc. Pasted onto rear end paper a series of further church designs in the Yorkshire area. One of two books produced by these Birmingham based architects. The other being "The Apartments of the House". Bright copy. The firm's work was confined mainly to the Birmingham area and included, housing, libraries, chapels and warehouses as well as numerous schools. The styles favoured in the book lean towards the arts and crafts. [Ref: 10295] **£160**

15. DAY Michael Modern Art in English Churches Mowbray 1984 92pp illus with colour and b/w plates. . 4to. Vg in dw. On modern works of art which aid in "turning one's mind towards God." [Ref: 21466] **£20**

16. [ENGLAND Richard] KNEVITT, Charles. Manikata: the making of a church Malta

Manikata Parish Church Publication 1980 Unpaginated c 60pp, b/w photographic essay. Small square 4to. Pictorial Wrappers. Very good

indeed. Photographs by Richard England , Joseph A Vella and Charles Knevitt. Attractive study of this modernist church in Malta. [Ref: 19607] **£20**

17. HAMMOND, Peter. Liturgy and Architecture Barrie and Rockliff 1960 xv+191pp,53 b/w photographs + many line drawings. With slightly worn d/w. With Reyner Banham's bookplate on front paste down. On re-ordering of churches to meet modern liturgical forms. [Ref: 2125] **£18**

18. HARCOURT-SMITH, Cecil. (foreword) New Churches Illustrated Photographs ground plans and information regarding fifty-two churches erected during the years 1926-1936

London Incorporated Church Building Society 1936 150pp, b/w ills with captions, period ads. 4to green wrappers. Wrappers a little creases, chipped at the head and base of the spine, else vg. Loosely inserted printed e-mail correspondence and a fax as well as the following- a page from the Architectural Review Dec 1930, showing St Francis of Assisi church at Bournemouth and an invitation card to a Lecture by R. H. Wilenski. Ex libris Gavin Stamp with his bookplate as well as the bookplate of P. G. M. Dickinson. [Ref: 20207] **£40**

19. [HUTTON] The Glass Engravings of John Hutton

Windsor, Berks. Designed and printed by John B Reed Ltd nd c1965 Stiff card wrappers. 30 b/w images with accompanying text reviewing the engraved glass of John Hutton. Begins with the work he did at Coventry Cathedral. Other examples include Ottawa and Newcastle upon Tyne Civic Centre. No author or publisher cited but appears to have been written by John Hutton himself. Useful publication on his techniques. Ephemeral item. [Ref: 21457] **£20**



20. (INCORPORATED CHURCH BUILDING SOCIETY) BROWN L.A. and MOORE Leslie T. The Dual-Purpose Church, the Incorporated Church Building Society Annual Report

London Incorporated Church Building Society 1952 28 + 24pp, b/w photographs, plans. 8vo. Wraps. Very good indeed. The Society's annual report for 1952 followed by an essay on constructing a building fit for use as both church and hall. With photographs and plans of several examples. [Ref: 15214] **£18**

21. (LEWERENTZ) CALDENBY. Claes, CARUSO Adam, and LIND Sven Ivar, Sigurd Lewerentz Two Churches

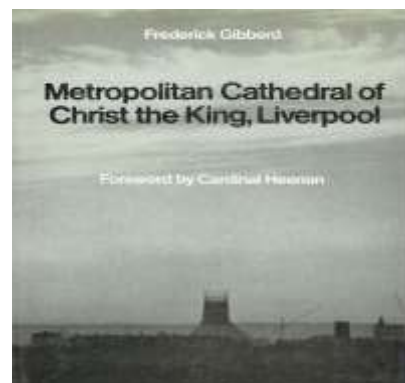
Stockholm Architektur Forlag AB 1997 92pp illus. with colour and b/w plates, drawings and plans. 4to. Boards, cloth spine. Fine. Loosely inserted review by Edwin Heathcote. Sigurd Lewerentz (1885-1975) collaborated often with Erik Gunnar Asplund and played an important role at the 1930 Stockholm exhibition, a breakthrough in Modernism. Afterwards Lewerentz went to create an intense personal architecture that has a strong following. The two examples featured in this book, the Church of St. Marks (1958) and the Church of St. Peters (1958), are considered to be his masterpieces. Photographs by Olof Hultin. Writings about this architect are considerably fewer in number than about Asplund. Scarce. [Ref: 16915] **£260**



Signed copy with autographed letter

22. [LIVERPOOL CATHEDRAL OF CHRIST THE KING] GIBBERD Frederick Metropolitan Cathedral of Christ the King, Liverpool

Architectural Press 1968 161pp, 111 ills in b/w and one in colour of the John Piper glass. Sm 4to. Vg in dw, which is slightly rubbed at edges. Architectural history of the development of this exceptional cathedral building. Very useful for the information about individuals and contractors party to the construction. Includes both material on the Gibberd design and Lutyen's project which formed the crypt and foundations. The cathedral's architect, Frederick Gibberd, was the winner of a worldwide design competition. Construction began in 1962 and was completed in 1967. Earlier designs for a cathedral were proposed in 1933 and 1953, but none were completed. This copy is signed by Gibberd and dedicated to Edward [Lord Bridges] Dated October 1968. Loosely inserted letter to Bridges which Frederick Gibberd sent with the book and also a printed pamphlet from Liverpool University printed on the occasion of Lord Bridges and others being conferred honorary degrees by Liverpool University in 1968. Gibberd addresses Bridges in the letter as "Dear Chanan" implying he has been a pillar of support, during the project. [Ref: 21227] **£65**

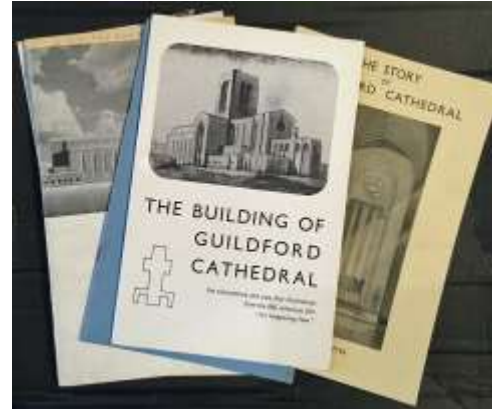


23. (MATHER & NUTTER) FERRANTI Sir Vincent de... (foreword) New Chaplaincy for Manchester nd c1965 10pp illustrated with b/w plates and line ills including plan. Stiff card wrappers Long 8vo. Upper wrapper is a copy of a coloured architectural perspective of the intended chaplaincy for the RC Church. Wrappers slightly worn at edge. Produced to fund raise for the project. Mather and Nutter were commissioned to design the new chaplaincy in the heart of the university campus. The columns that run from the first floor, up three storeys to the roof are free from any connections to the floor slabs; the second and third floors are hung from the beam in the roof; a solution by Ove Arup. A commission which was integrated with the next door nineteenth century Church of the Holy Name of Jesus, a grade I listed building. [Ref: 17495] **£14**

24. MAUFE, Edward. Modern Church Architecture: with 50 illustrations of Modern Foreign Churches
London Incorporated Church Building Society 1948 64pp illustrated with b/w plates, organised by country in which the churches were built. 8vo. Lettered boards which are a little browned and soiled unevenly. Internally very good. 8pp text and the remainder are images with long captions opposite which detail the architects used in construction and a few notes on style etc. Last c10pp period ads for items relating to church fixtures and fittings. Most examples drawn from Europe but not exclusively. Images largely drawn from the RIBA collection, others from Modern Sacred Art which also features in this list. [Ref: 21231] **£28**

25. (MAUFE, Edward) The story of Guildford Cathedral + 6 additional related pamphlets
Guildford The Diocese of Guildford etc. 1934-c1964 The collection comprises a small group of pamphlets which chart the development of the Cathedral: 1} "A Noble Task A Clear Call A Great Inspiration, New Cathedral and Church Funds" 1934 16+ [4]pp illustrated with b/w plates. Loosely inserted list of donors. Fund raising pamphlet. 2} The story of Guildford Cathedral "The first chapter" vol 1 no 1 June 1938 20pp illus. & 3} Vol 1 no 2 1938 "The second chapter" 36pp illus. 4} Guildford Cathedral The Building Goes Forward Bulletin no 3 Spring 1949, 16pp illus, 5} CRAWFORD, Philip "The story of a cathedral in building" 22pp first edition. Blue wrappers. nd.6} "Guildford Cathedral towards completion" 1959 28pp illustrated with b/w plates. 7} The Building of Guildford Cathedral

1964. 32pp illustrated with 60 illustrations from the BBC TV film "Its happening now". All very good condition. A useful collection of items. Designed by Sir Edward Maufe, construction began in 1936 so these pamphlets usefully chart progress of the construction. [Ref: 15628] **£45**



26. (MAUFE, Edward) St Columba's: Church of Scotland, London: The New Building and the Old Some notes on its history with descriptions of the destruction of the church and of the new building including the Organ.
A Friends of St Columba's Publication 1960 [revised and reprinted edition]. 32pp illustrated with b/w plates. Loosely inserted invitation leaflet for the Friends of St Columba's Blue decorated wrappers. Very good. The new building was designed by Edward Maufe and the images include details of the project with associated text. **£10**

27. MEARA, David. Modern Memorial Brasses 1880-2001
Donnington Shaun Tyas 2008 302pp illustrated. 8vo. Fine in dust wrapper. From the collection of Gavin Stamp with his book ticket on front paste down. The only book on modern memorial brasses. It covers the history of the trade is set within the context of the ecclesiological developments of the period and the general decline in the use of memorials for commemoration within church building during the twentieth-century. Additionally, there is a checklist of the most significant late-nineteenth- and twentieth-century brasses. [Ref: 21465] **£35**



28. [MODERN CHURCH ART] DEVONSHIRE-JONES Tom, [editor] Images of Christ: Religious Iconography in Twentieth Century British Art

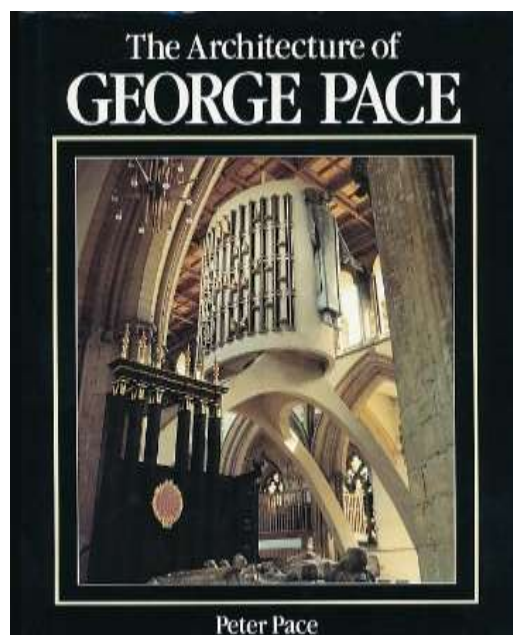
Northampton St Mathews 1993 80pp illustrated with colour and b/w plates. Small 4to. Book design by Richard Hollis. The exhibition was curated by James Huntington-Whitely. A catalogue, with essays by Frances Spalding, George Pattison, Rowan Williams and Tom Devonshire-Jones. The exhibition brought together examples of modern painting and sculpture dealing with Christian themes. to mark the centenary of the parish church of St Matthew, Northampton. It paid tribute to Walter Hussey (1909-1985), who was vicar of the parish from 1937 to 1955. He commissioned two major works for the church; Madonna and Child (1943-44) by Henry Moore (known universally as The Northampton Madonna. and Crucifixion (1946) by Graham Sutherland. [Ref: 21224] £28

29. NICHOLSON Sir Charles & SPOONER Charles Recent English Ecclesiastical Architecture A Series of Illustrations of Notable Modern Work with Prefatory Articles

London Technical Journals, Ltd. [1911] 1912 250pp with many large b/w photographs and b/w plans & elevations + xxii of period adverts. Large 4to in lettered cloth boards. A little musty. Inner hinge cracked. Good just. A fantastic photographic catalogue of pre-war ecclesiastical architectural design in England. [Ref: 9148] £25

30. PACE, Peter. The Architecture of George G. Pace

London, B. T. Batsford, 1990 288 pages, 300 b&w and 14 colour photographs, 100 line drawings and plans plus bibliography and references. Boards in dust jacket, vg. A detailed account of the built and written works of the 20th-century architect, George G. Pace. Many of Pace's ideas raise issues at the heart of today's debates about modern architecture and design, and this volume throws light on the fundamentals of church architecture and furnishings from new churches to conserving ancient cathedrals. Includes a useful gazetteer of projects. The author, Peter Pace, is George Pace's son, and is himself an architect specialising in the conservation of churches and other ancient buildings [Ref: 19185] £35



31. [PACE, George G.] The University College of North Staffordshire: The College Chapel Appeal Published by the committee of the College Chapel Appeal nd c1960. 12pp illustrated with centre fold illustration of the proposed designs by George Pace. Additional illustrations show the intended design of this chapel which is situated at Keele University. Appeal brochure with white wrappers with red crucifix image on upper wrapper. Appeal was for £60,000. Useful for the proposed design. [Ref: 21222] £20

32. PERKINS, E. Benson and HEARN, Albert .The Methodist Church Builds Again: A Consideration of the Purpose, Principles and Plans for Methodist Church Building

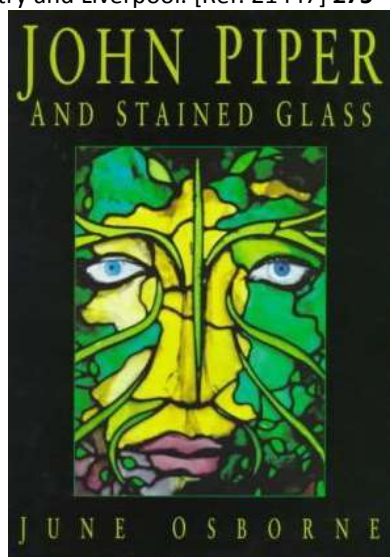
London The Epworth Press 1946 41pp illus with b/w plates and 7 folded fold-out plans and elevations in rear pocket. Good copy. Designed to assist in post war reconstruction of Methodist chapels and churches. Includes plans by architects, Messrs Ernest Prestwich, Leslie Halliday and Alan L Snow. Section on organ specifications by Dr G F Brockless. One of a limited number of books relating to non-conformist church building. [Ref: 17744] £30

33. PIPER, John. Stained Glass: art or anti-art London Studio Vista 1968

95pp Illustrated with b/w plates. Decorated wrappers. Rubbed at all edges. Discussion of the painter's role in stained glass past and present. Useful essay on the subject. Hard to find. [Ref: 21446] £25

34. (PIPER) OSBORNE, June. John Piper and Stained Glass

Alan Sutton 1997 224pp. Illustrated. 4to. Very good with good dust wrapper 1st edition of a hard to find title. Piper's interest in stained glass began as a boy, when he traced the stained glass windows near his home in Surrey and on family holidays. This interest led to Piper designing more than 60 stained glass windows during his career, using a blend of 'traditional' early stained glass and modernism. His work is found in locations from local churches to major cathedrals, including Coventry and Liverpool. [Ref: 21447] **£75**



35. (PRIOR Edward) GARNHAM, Trevor. (text) St Andrew's Church Roker (Sunderland)

Phaidon Press Ltd, 1996 60pp illustrated with b/w and colour plates. Large 4to. Decorated wrappers. New. A detailed account of Edward Prior's 1905 Sunderland church with material on Gimson, The Barnsleys and other contributing craftsmen. Includes plans and elevations of the church. [Ref: 7661] **£15**

36. REYNTIENS Patrick The Beauty of Stained Glass

London, The Herbert Press 1990 224pp illustrated with colour and black and white plates. 4to. 29 x 22cm. Very good copy with good dust wrapper. Survey of stained glass, arranged chronologically from early periods to the 20th century. With much information on techniques and manufacture, plus some of Reyntiens' own designs. [Ref: 13273] **£30**

37. (REYNTIENS) STAMP Gavin (intro) Patrick Reyntiens: Glass Painted and Stained: Visions in Light

Bruton, Somerset Bruton Gallery Ltd 1985 36pp. 16 colour plates. 4to. Wrappers with overprinted decorated dust wrapper. Fine.

Beautiful collection of Reyntiens' art, in a selection of high quality colour plates. Includes a short biography and introduction to his work. Fine Art Society 'private view' card inside cover. To accompany an exhibition at the Bruton Gallery. [Ref: 16215] **£18**

38. RICHARDSON, Phyllis. New Sacred Architecture

London Laurence King 2004 224pp illustrated with colour and b/w plates. Large 4to. Fine in dust wrapper. This title looks at ways in which contemporary architects are approaching religious or meditative space, this book focuses on churches, chapels, temples, synagogues and mosques that have been built in the last few years and that represent a late-twentieth/ early-twenty first century aesthetic. Case studies of works by John Pawson, Thomas Hetherwick, Rafael Moneo and others. [Ref: 21236] **£35**

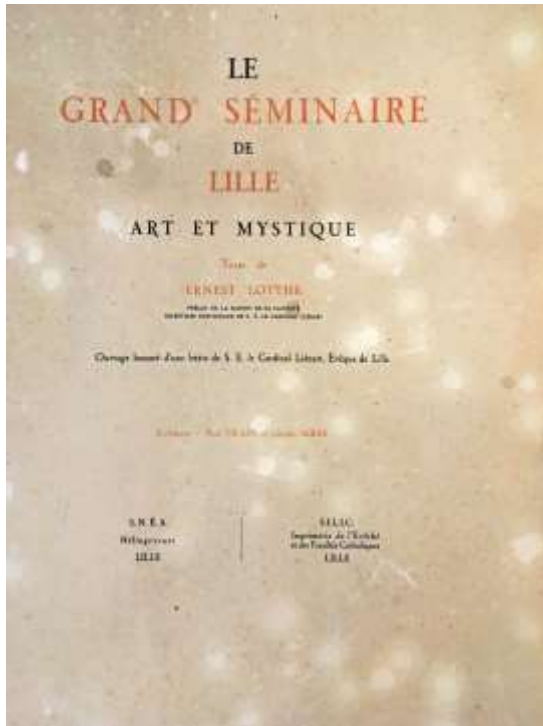
39. [RONCHAMP] LE CORBUSIER Textes et Dessins pour Ronchamp

Paris Editions Forces-Vives 1965 Upaginated. Micro notebook on the design of Ronchamp. Coloured wrappers 120x120mm. Wrappers age browned and with small stain from tea cup on upper wrapper. Nonetheless this is an attractive item on the design of Ronchamp with b/w line ills throughout. [Ref: 21563] **£25**



40. [SEMINARY DESIGN] LOTHE, Ernest Le Grand Seminaire de Lille

Lille S.N.E.A. (Hélogravure) & S.I.L.I.C. 1933 97pp illustrated with photogravure plates. Large 4to. 255x330mm. Wrappers which are slightly age speckled else very good copy. Designed by Paul Vilain and Charle Serex, the imposing seminary was built in the early 1930s. This publication documents the building and life of those who would train as priests. Interesting inter-war publication. [Ref: 21564] **£35**



41. SHORT, Ernest. (edited by), Post War Church Building a Practical Handbook

London, Hollis and Carter 1947 xvii + 202pp illustrated with b/w plates. 4to. Very good copy with dust wrapper. Dust wrapper slightly worn and dusty. Introduction by John Rothenstein. Contributions by key commentators and designers at the time including Judith D. Guillum Scott on Modern Stained Glass and Church Plate, Sir Charles Nicholson on the church design for contemporary use and many others besides. Loosely inserted press clippings at rear [Ref: 13992] **£38**

42. STAMP, Gavin. [Editor] The Twentieth Century Church

London, The Twentieth Century Society 1998 128pp b/w illustrations in text, softbound 4to in good condition. A useful guide to modern churches, published as no. 3 in a series of journals containing essays on twentieth century architecture. Foreword by Gavin Stamp. Gavin Stamp's copy with his book ticket pasted to front inside cover, loosely inserted postcards, a letter about the book from Roland Jeffery and a typed book review for the publication. [Ref: 21467] **£24**

43. WATTS & COMPANY LIMITED Artists in all Church Furnishings

Published by the firm nd 1960 8pp booklet illustrated with b/w plates. Wrappers. The firm was formed in 1879 by architects who had

difficulty in obtaining Church furnishings including textiles. Illustrated double page spread of van der Weyden damask. Promotional booklet indicating the range of products this famous firm continued to produce. Watts continues the tradition of high quality craftsmanship and individual designs today. Embroidery is an important speciality relying entirely on hand techniques. [Ref: 6915] **£12**

Ordering:

1. Ordering: Orders may be placed by phone, fax, e-mail or letter.

It is recommended that you order by fax, e-mail or phone. 24 hour answering service.

2. Payment: On receipt of books or pro forma invoice if sent. Paypal, Maestro, Visa, MasterCard and American Express accepted.

3. All customers may pay by Sterling draft or by direct transfer to our bank account.

4. Dispatch & postal charges: At cost. UK parcels sent by Parcelforce 48 hour service or Royal Mail unless otherwise requested. Charges rarely exceed £9.45 for any service. Overseas parcels sent airmail unless otherwise requested. Please be aware that international purchases may duties such as customs duty and VAT when you buy from us. We are not responsible for paying these.

5. Care has been taken to describe the books accurately. All books are in good condition unless otherwise stated. Books can be returned if found to be unsatisfactory or defective. Notice should be given within 7 days.

VISIT US AT

**STAND F43 FIRSTS: LONDON RARE BOOK FAIR
Saatchi Gallery 21-24 October**

Tickets free from the Antiquarian Booksellers' Association at firstlondon.com or from me on request.

